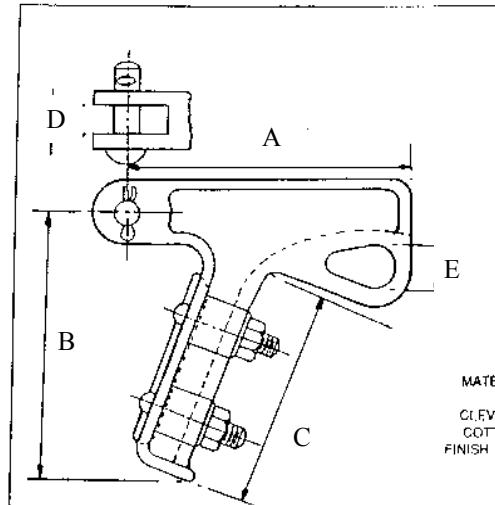


QUADRANT DEADEND CLAMPS

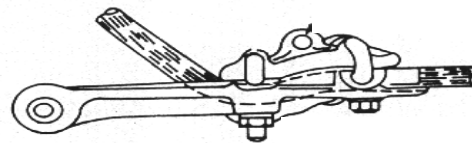
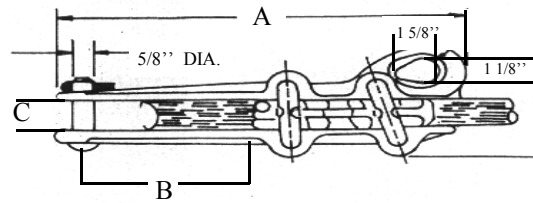


MATERIALS: BODY AND KEEPER,
ALUMINIUM OR M.C.I.
CLEVIS PIN - GALVANIZED STEEL
COTTER PIN - STAINLESS STEEL
FINISH: HOT DIP GALVANIZED FOR
IRON PARTS

CATA-LOG NUMBER	CABLE DIAMETER	CABLE RANGE	DIM. A	DIM. B	DIM. C	DIM. D	DIM. E	ULTIMATE STRENGTH
AQC52N	.18" - .52"	#6 - #4/0 AL. #6 - #3/0 ACSR	4"	4 7/8"	4 3/4"	11/16"	7/8"	8,000 LBS.
AQC57N	.25" - .57"	#2 - #4/0 AL. #2 - #4/0 ACSR	5 1/2"	5 1/8"	5 9/16"	3/4"	1"	10,000 LBS.
AQC64N	.20" - .64"	#4 - #300 AL. #6 - #266.8 ACSR	4 5/8"	5"	4 5/8"	3/4"	1"	15,000 LBS.
AQC78N	.386" - .787"	#2/0 - #450 AL. #1/0 - #397 ACSR	6 1/2"	6 1/8"	7"	13/16"	1 1/8"	15,000 LBS.
AQC88N	.52" - .88"	#4/0 - #556.5 AL. #4/0 - #556.5 ACSR	6 3/8"	7"	7 7/16"	15/16"	1"	15,000 LBS.
AQC100N	.50" - 1.00"	#4/0 - #715 AL. #3/0 - #636 ACSR	9 7/8"	8 3/4"	9 5/16"	1 1/16"	1 1/4"	18,000 LBS.
MD46N	.18" - .46"	3/16" - 3/8" GALV. STEEL #6 STR. - #4/0 SOL. COPPER	6"	5 1/2"	4 3/8"	11/16"	7/8"	15,000 LBS.
MD55N	.22" - .55"	1/4" - 1/2" GALV. STEEL #4 STR. - #4/0 STR. COPPER	8"	8 5/8"	7 3/8"	11/16"	1 1/4"	19,000 LBS.

THE ABOVE QUADRANT DEADEND CLAMPS ARE OFFERED IN ALUMINUM AND MALLEABLE IRON.
THE MALLEABLE CLAMPS "MD" SERIES CAN BE USED ON COPPER OR COPPERWELD CONDUCTORS.
FOR SOCKET FITTING CHANGE THE SUFFIX "N" TO THE SUFFIX "S" IN THE CATALOG NUMBER.
FOR CLEVIS FITTING CHANGE THE SUFFIX "N" TO THE SUFFIX "C".
THE IRON PARTS ARE HOT DIPPED GALVANIZED TO ASTM A153.
FOR OTHER CHOICES PLEASE REFER TO PAGE 3-6

ALUMINUM STRAIGHT DEADEND CLAMPS

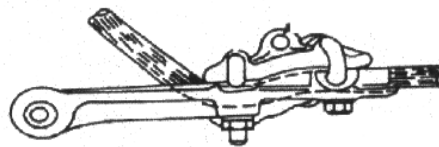
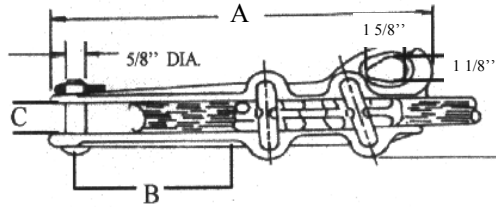


CATALOG NUMBER	CLAMPING RANGE	CONDUCTOR RANGE	DIM. A	DIM. B	DIM. C	U-BOLTS & SIZE	ULTIMATE STRENGTH
SAC - 48 - N	.18" - .502"	#6 - #3/0 AL. #6 - #3/0 ACSR	5 1/4"	2 1/4"	11/16"	2 - 3/8"	7,000 LBS.
SAC - 51 - N	.18" - .51"	#6 - #3/0 AL. #6 - #3/0 ACSR	7 5/8"	3 1/4"	11/16"	2 - 1/2"	7,000 LBS.
SAC - 60 - N	.19" - .60"	#4 - #266.8 AL. #6 - #266.8 ACSR	8 1/4"	4"	3/4"	2 - 1/2"	8,000 LBS.
SAC - 60L - N	.19" - .60"	#4 - #266.8 AL. #6 - #266.8 ACSR	10 5/8"	6"	3/4"	2 - 1/2"	8,000 LBS.
SAC - 88 - N	.31" - .88"	#1 - #600 AL. #2 - #477 ACSR	9"	4 1/2"	15/16"	2 - 1/2"	10,000 LBS.
SAC - 88L - N	.31" - .88"	#1 - #600 AL. #2 - #477 ACSR	12"	7 1/2"	15/16"	2 - 1/2"	10,000 LBS.
SAC - 116 - N	.31" - 1.16"	#1 - #900 AL. #2 - #556 ACSR	10 1/2"	5 1/2"	1"	2 - 1/2"	15,000 LBS.
SAC - 130 - N	.64" - 1.30"	#300 - #1272 AL. #266.8 - #1113 ACSR	10 1/2"	5 1/2"	1"	2 - 1/2"	15,000 LBS.

THE ABOVE DEADEND CLAMPS ARE USED PRIMARILY FOR DISTRIBUTION AND LIGHT TRANSMISSION WORK.
FOR SOCKET FITTING CHANGE THE SUFFIX "N" TO THE SUFFIX "S" IN THE CATALOG NUMBER.
FOR CLEVIS FITTING CHANGE THE SUFFIX "N" TO THE SUFFIX "C".
THE MATERIAL ON THE ABOVE STRAIGHT LINE DEADEND CLAMPS IS AS FOLLOWS :

BODY AND KEEPER : A356 - T6 ALUMINUM ALLOY
CLEVIS PIN AND BOLTS : GALVANIZED STEEL
COTTER PIN : STAINLESS STEEL
FINISH : HOT DIPPED GALVANIZED FOR IRON PARTS

FERROUS STRAIGHT DEADEND CLAMPS



CATALOG NUMBER	CLAMPING RANGE	CONDUCTOR RANGE COPPER / ALUMINUM	DIM. A	DIM. B	DIM. C	U-BOLTS & SIZE	ULTIMATE STRENGTH
SFC - 48 - N	.18" - .502"	#6 - #3/0 MCM	5 1/4"	2 1/4"	11/16"	2 - 3/8"	7,000 LBS.
SFC - 51 - N	.18" - .51"	#6 - #3/0 MCM	7 5/8"	3 1/4"	11/16"	2 - 1/2"	7,000 LBS.
SFC - 60 - N	.19" - .60"	#4 - #266 MCM	8 1/4"	4"	3/4"	2 - 1/2"	8,000 LBS.
SFC - 88 - N	.31" - .88"	#1/0 - #500 MCM	9"	4 1/2"	15/16"	2 - 1/2"	10,000 LBS.
SFC - 130 - N	.64" - .1.30"	#266 - #1250 MCM	10 1/2"	5 1/2"	1"	2 - 1/2"	15,000 LBS.

THE ABOVE DEADEND CLAMPS ARE USED PRIMARILY FOR DISTRIBUTION AND LIGHT TRANSMISSION WORK. FOR SOCKET FITTING CHANGE THE SUFFIX "N" TO THE SUFFIX "S" IN THE CATALOG NUMBER.

FOR CLEVIS FITTING CHANGE THE SUFFIX "N" TO THE SUFFIX "C".

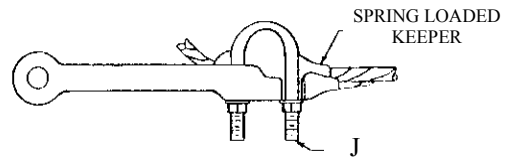
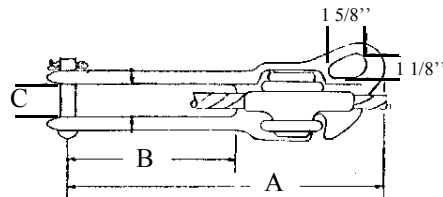
THE MATERIAL ON THE ABOVE STRAIGHT LINE DEADEND CLAMPS IS AS FOLLOWS :

BODY AND KEEPER : MALLEABLE CAST IRON HOT DIPPED GALVANIZED TO ASTM A153

CLEVIS PIN AND BOLTS : GALVANIZED STEEL HOT DIPPED GALVANIZED TO ASTM A153

COTTER PIN : STAINLESS STEEL

SIDE OPENING DEADEND CLAMP



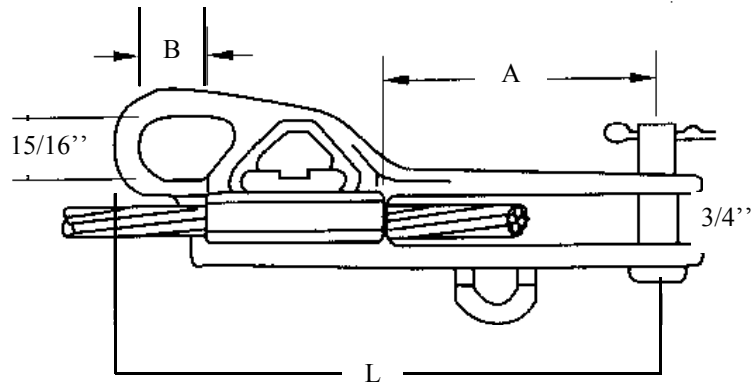
CATALOG NUMBER	CONDUCTOR RANGE		DIM. "A"	DIM. "B"	DIM. "C"	DIM. "J"	MINIMUM ULTIMATE STRENGTH		WT. PER 100
	INCHES	AWG					BODY	SAG. EYE	
SODC - 47	.19 - .47	#6 - #2 ACSR #4 - #3/0 AL.	7 3/4"	4 5/16"	3/4"	3/8"	7000 LBS.	4000 LBS.	123 LBS.
SODC - 57	.25 - .57	#4 - #4/0 ACSR #2 - #4/0 AL.	8 3/8"	4 1/2"	3/4"	3/8"	8000 LBS.	5000 LBS.	176 LBS.
SODC - 70	.31 - .70	#2 - #336 ACSR #1 - #350 AL.	8 3/4"	4 3/4"	13/16"	3/8"	9000 LBS.	6000 LBS.	195 LBS.
SODC - 82	.31 - .82	#2 - #477 ACSR #1 - #477 AL.	10 3/32"	5"	7/8"	1/2"	9000 LBS.	6000 LBS.	305 LBS.
SODC - 88	.46 - .88	#2/0 - #556 ACSR #3/0 - #556 AL.	10 1/4"	5"	1"	1/2"	10000 LBS.	6000 LBS.	323 LBS.
SODC - 116	.68 - 1.16	#336 - #954 ACSR #397.5 - 1000 AL.	12"	7 1/4"	1"	1/2"	12000 LBS.	8000 LBS.	380 LBS.

THE ABOVE SIDE OPENING DEADEND CLAMPS ARE PRIMARILY USED FOR HOT LINE DEAD-ENDING.
EACH IS FURNISHED WITH A SPRING LOADED KEEPER, WHICH IS IN AN OPEN POSITION FOR INSTALLATION.
FOR A SOCKET FITTING ADD SUFFIX : "S"
FOR A CLEVIS FITTING ADD SUFFIX : "C"

MATERIAL : BODY & KEEPER - ALUMINUM ALLOY A - 356 - T
HARDWARE - HOT DIPPED GALVANIZED STEEL
COTTER PIN & SPRING - STAINLESS STEEL

SIDE OPENING DEADEND CLAMP

3-5

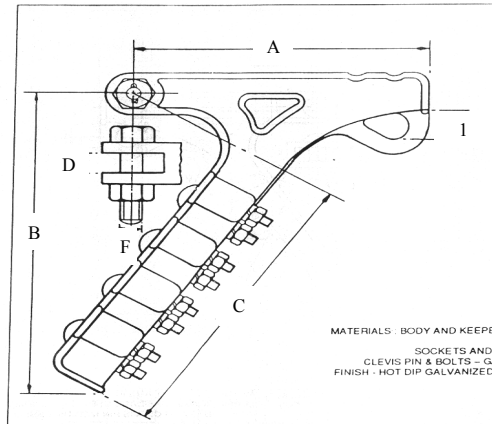


CATALOG NUMBER	CONDUCTOR RANGE		DIM. "L"	DIM. "A"	DIM. "B"	DIM. "J"	MINIMUM ULTIMATE STRENGTH		WT. PER 100
	INCHES	AWG					BODY	SAG. EYE	
SODC - 51E	.19 - .51	#6 - #3/0 ACSR #4 - #3/0 AL.	8 1/2"	3 3/4"	1"	1/2"	8000 LBS.	6000 LBS.	123 LBS.

THE ABOVE SIDE OPENING DEADEND CLAMP IS PRIMARILY USED FOR HOT LINE DEAD-ENDING. EACH IS FURNISHED WITH A SPRING LOADED KEEPER, WHICH IS IN AN OPEN POSITION FOR INSTALLATION. AN INSTALLATION EYE IS ALSO FURNISHED, SO CLAMP CAN BE HANDLED WITH A SHOTGUN STICK. FOR TIN PLATED CLAMPS ADD THE SUFFIX - "TP" FOR A SOCKET FITTING ADD SUFFIX: "S" FOR A CLEVIS FITTING ADD SUFFIX: "C"

MATERIAL : BODY & KEEPER - ALUMINUM ALLOY A356 - T6
HARDWARE - HOT DIPPED GALVANIZED STEEL TO ASTM A153
COTTER PIN & SPRING - STAINLESS STEEL

STRAIN DEADEND CLAMPS



CATALOG NUMBER	CLAMPING RANGE	DIM. A	DIM. B	DIM. C	DIM. D	DIM. F	U BOLTS NO.	U BOLTS SIZE	ULTIMATE STRENGTH
ASC - 59 - N	.20" - .59"	8"	6 1/2"	7 3/8"	5/8"	11/16"	3	1/2"	15,000 LBS.
ASC - 70 - N	.31" - .708"	9"	7 1/2"	8"	5/8"	5/8"	3	1/2"	15,000 LBS.
ASC - 75 - N	.30" - .75"	10 1/4"	6 1/2"	8 3/8"	3/4"	5/8"	4	1/2"	20,000 LBS.
ASC - 86 - N	.48" - .86"	11 1/2"	12"	10"	1"	5/8"	4	1/2"	23,000 LBS.
ASC - 94 - N	.46" - .94"	11 1/4"	7 1/2"	9 3/8"	1"	5/8"	4	1/2"	25,000 LBS.
ASC - 100 - N	.472" - 1.00"	11 1/2"	8"	10 3/4"	1 1/16"	5/8"	4	1/2"	25,000 LBS.
ASC - 120 - N	.50" - 1.20"	13 1/8"	9"	11 1/2"	1 1/4"	3/4"	5	1/2"	30,000 LBS.
ASC - 142 - N	.70" - 1.55"	14"	10 1/2"	13 1/8"	1 7/16"	3/4"	5	5/8"	35,000 LBS.
ASC - 147 - N	.71" - 1.47"	14 1/2"	10 1/2"	12 1/4"	1 1/2"	3/4"	6	5/8"	40,000 LBS.
ASC - 185 - N	1.39" - 1.85"	17"	12"	18"	1 11/16"	1"	5	5/8"	50,000 LBS.
MSC - 65 - N	.20" - .65"	5 7/8"	—	4 5/8"	11/16"	5/8"	2	1/2"	15,000 LBS.
MSC - 68 - N	.20" - .68"	8"	—	7 3/8"	11/16"	5/8"	3	1/2"	18,000 LBS.
MSC - 84 - N	.36" - .84"	10 3/4"	10 3/8"	8 7/16"	15/16"	5/8"	4	1/2"	30,000 LBS.

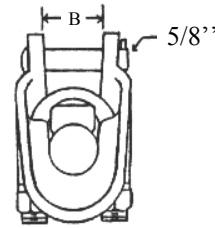
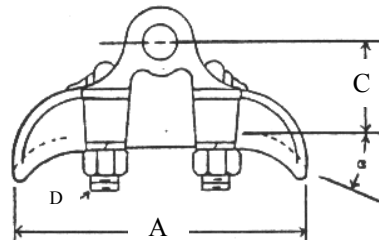
FOR SOCKET FITTING CHANGE THE SUFFIX "N" TO "S" IN THE CATALOG NUMBER
FOR CLEVIS FITTING CHANGE "N" TO "C".

THE MATERIAL FOR THE TYPE "ASC" CLAMPS IS A356 - T6 ALUMINUM ALLOY.

THE MATERIAL FOR THE TYPE "MSC" CLAMP IS MALLEABLE CAST IRON.

ALL IRON PARTS ARE HOT DIPPED GALVANIZED TO ASTM A153.

SUSPENSION CLAMPS



MATERIALS: BODY AND KEEPER, ALUMINIUM ALLOY, HARDWARE - HOT DIP GALVANIZED STEEL, SOCKETS AND CLEVISSES - M.C.I. HOT DIP GALVANIZED
LOCKING PIN - STAINLESS STEEL

CATALOG NUMBER	CLAMPING RANGE	DIM. A	DIM. B	DIM. C	DIM. D	ULTIMATE STRENGTH	APPROX. WEIGHT PER 100
ALSC - 62 - N	.20" - .62"	6 3/4"	3/4"	2 1/8"	1/2"	17,000 LBS.	190 LBS.
ALSC - 86 - N	.40" - .86"	7"	7/8"	2 1/8"	1/2"	18,000 LBS.	210 LBS.
ALSC - 104 - N	.50" - 1.04"	8 1/8"	1 1/8"	2 3/4"	1/2"	25,000 LBS.	250 LBS.
ALSC - 119 - N	.50" - 1.19"	8"	1 3/8"	2 1/2"	1/2"	25,000 LBS.	280 LBS.
ALSC - 139 - N	.90" - 1.39"	8 7/8"	1 1/2"	2 7/8"	1/2"	25,000 LBS.	320 LBS.
ALSC - 147 - N	.90" - 1.47"	8 3/4"	1 9/16"	2 7/8"	1/2"	25,000 LBS.	350 LBS.
ALSC - 162 - N	1.10" - 1.62"	9 1/2"	1 13/16"	3 1/8"	1/2"	25,000 LBS.	380 LBS.
ALSC - 182 - N	1.25" - 1.82"	10"	1 15/16"	3 3/8"	1/2"	25,000 LBS.	420 LBS.
ALSC - 204 - N	1.40" - 2.04"	10 1/2"	2 1/4"	3 1/2"	5/8"	25,000 LBS.	490 LBS.
ALSC - 252 - N	2.00" - 2.52"	12"	2 3/4"	4 1/4"	5/8"	30,000 LBS.	900 LBS.
MLSC - 46 - N	.20" - .46"	5 5/8"	7/8"	2"	5/8"	16,000 LBS.	215 LBS.
MLSC - 60 - N	.12" - .60"	5 3/4"	11/16"	2 1/8"	5/8"	16,000 LBS.	265 LBS.
MLSC - 70 - N	.20" - .70"	6 3/4"	3/4"	2 1/4"	5/8"	16,000 LBS.	290 LBS.
MLSC - 82 - N	.30" - .83"	7 1/2"	13/16"	2 3/8"	5/8"	18,000 LBS.	325 LBS.
MLSC - 104 - N	.30" - .70"	7 1/8"	13/16"	2 1/4"	5/8"	18,000 LBS.	325 LBS.

FOR A SOCKET FITTING CHANGE THE SUFFIX "N" IN THE PART NUMBER TO AN "S".

FOR CLEVIS FITTING CHANGE THE SUFFIX "N" TO A "C".

THE MATERIAL ON THE TYPE "ALSC" CLAMPS IS A356 - T6 ALUMINIUM ALLOY.

THE MATERIAL ON THE TYPE "MLSC" CLAMPS IS MALLEABLE CAST IRON.

ALL HARDWARE IS STEEL HOT DIPPED GALVANIZED TO ASTM A 153. COTTER PIN IS STAINLESS STEEL..

ANGLE SUSPENSION CLAMPS

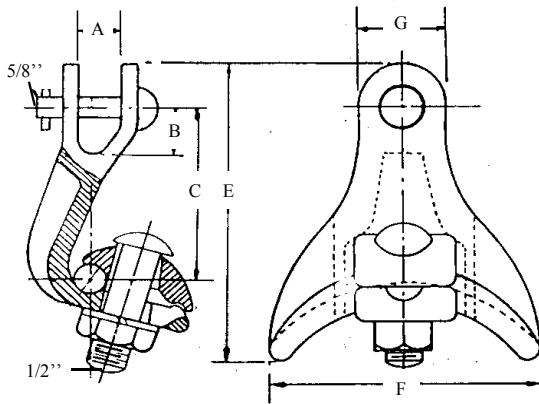


FIG. 1

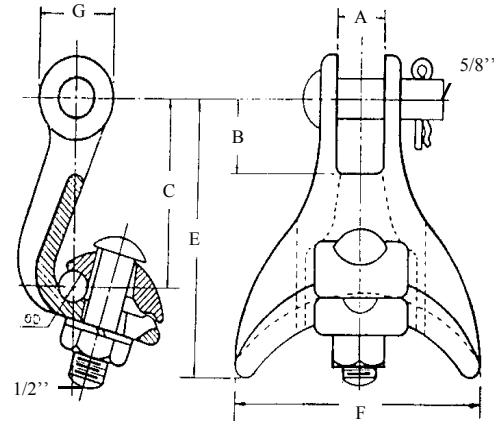


FIG. 2

CATALOG NUMBER	FIG. NO.	CLAMP RANGE DIA.	DIM. A	DIM. B	DIM. C	DIM. E	DIM. F	DIM. G	ULTIMATE STRENGTH
AASC - 60 - 90	1	.16" - .60"	11/16"	15/16"	2 1/8"	4 3/8"	4 3/16"	1 1/2"	7000 LBS.
AASC - 60	2	.16" - .60"	11/16"	1 1/8"	2 1/8"	4 3/16"	4 3/16"	1 1/16"	7000 LBS.
AASC - 75 - 90	1	.16" - .75"	13/16"	1 1/8"	2 3/8"	3"	4 1/2"	1 1/2"	10000 LBS.
AASC - 75	2	.16" - .75"	11/16"	1 1/8"	3"	4"	4 1/2"	1 1/2"	10000 LBS.
AASC - 125 - 90	1	.43" - 1.25"	13/16"	1 1/8"	3"	4 1/8"	5 1/4"	1 1/2"	12000 LBS.
AASC - 125	2	.43" - 1.25"	11/16"	1 1/8"	4"	4 3/4"	5 1/4"	1 1/2"	12000 LBS.
AASC - 166 - 90	1	.75" - 1.66"	3/4"	1 1/8"	3"	4"	7 1/4"	1 1/2"	18000 LBS.
AASC - 166	2	.75" - 1.66"	13/16"	1 1/8"	6"	7 1/8"	4"	1 1/2"	18000 LBS.
FASC - 60 - 90	1	.16" - .60"	1 1/6"	1 1/8"	2 1/8"	3"	4 3/16"	1 1/2"	12000 LBS.
FASC - 60	2	.16" - .60"	11/16"	1 1/8"	2 1/8"	3 1/4"	4 3/16"	1 1/2"	12000 LBS.
FASC - 166 - 90	1	.75" - 1.66"	3/4"	1 1/8"	3"	4"	7 1/4"	1 1/2"	20000 LBS.
FASC - 166	2	.75" - 1.66"	13/16"	1 1/8"	6"	7 1/8"	4"	1 1/2"	20000 LBS.

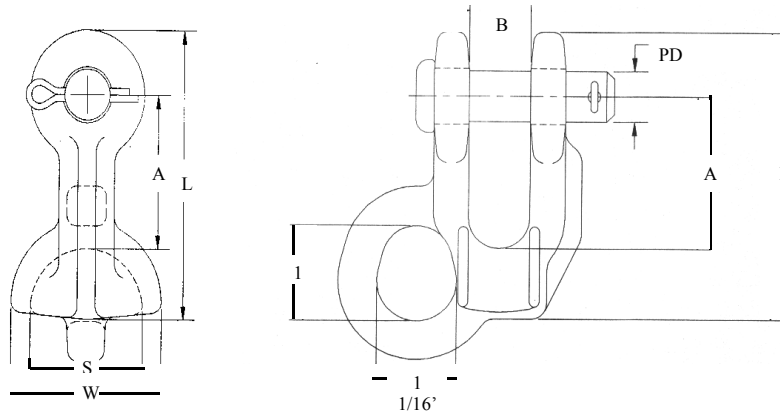
THE ABOVE ANGLE SUSPENSION CLAMPS ARE OFFERED IN EITHER ALUMINUM "AASC" SERIES OR IN DUCTILE IRON "FASC" SERIES. THE ONE PIECE DESIGN ALLOWS THE INSTALLER TO PERFORM HOT LINE WORK.

MATERIAL : "AASC" SERIES - ALUMINUM ALLOT 356 - T6

"FASC" SERIES - DUCTILE IRON

HARDWARE AND DUCTILE IRON CLAMPS ARE HOT DIPPED GALVANIZED TO ASTM 153
COTTER KEY - STAINLESS STEEL

THIMBLE CLEVIS PULLING EYE TYPE

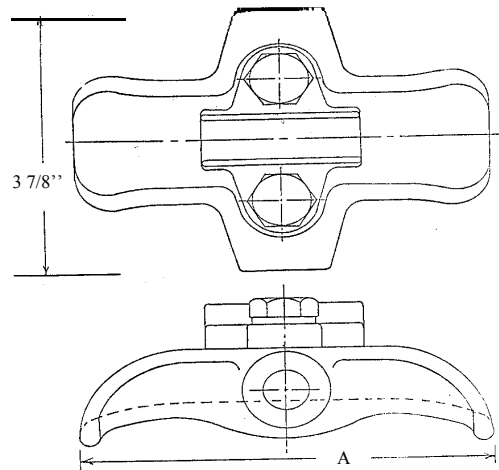


CATALOG NUMBER	CONDUCTOR RANGE ACSR	GUY WIRE RANGE	DIM. L	DIM. A	DIM. B	DIM. S	DIM. W	DIM. PD
PTC - 75A	#6 - #336	3/16" - 5/16"	3 5/8"	1 15/16"	3/4"	1 1/2"	2 1/8"	5/8"
PTC - 88A	#6 - #477	3/16" - 3/8"	3 5/8"	1 15/16"	7/8"	1 1/2"	2 1/8"	5/8"
PTC - 100A	#6 - #650	3/36" - 3/8"	4 1/4"	2 1/4"	1"	1 3/4"	2 5/8"	5/8"
PTC - 75F	#6 - #336	3/16" - 1/2"	3 3/4"	1 15/16"	3/4"	1 1/2"	2 1/8"	5/8"
PTC - 88F	#6 - #477	3/16" - 9/16"	3 5/8"	1 15/16"	7/8"	1 1/2"	2 1/8"	5/8"
PTC - 88LF	#6 - #477	3/16" - 9/16"	4 1/4"	1 15/16"	7/8"	1 1/2"	2 1/8"	3/4"
PTC - 100F	#6 - #650	3/16" - 5/8"	4 1/4"	2 1/4"	1"	1 3/4"	2 5/8"	3/4"

CAT. NO.	ULTIMATE STRENGTH THIMBLE	ULTIMATE STRENGTH EYE
PTC - 75A	10000 LBS.	6000 LBS.
PTC - 88A	12000 LBS.	7000 LBS.
PTC - 100A	15000 LBS.	9000 LBS.
PTC - 75F	25000 LBS.	15000 LBS.
PTC - 88F	20000 LBS.	12000 LBS.
PTC - 88LF	35000 LBS.	21000 LBS.
PTC - 100F	40000 LBS.	24000 LBS.

MATERIAL : FOR "A" TYPE CLEVIS - BODY: ALUMINUM ALLOY 356 - T6
 "F" TYPE CLEVIS - DUCTILE IRON
 CLEVIS PIN : STEEL HOT DIPPED GALVANIZED TO ASTM A 153
 COTTER KEY : STAINLESS STEEL

LINE POST TRUNNION CLAMPS



CATALOG NUMBER	CLAMP BODY TYPE	CLAMPING RANGE INCHES	CONDUCTOR RANGE ACSR	CONDUCTOR RANGE ALL ALUMINUM	DIMENSION A INCHES	APPROX. WEIGHT PER 100
LPC - 57	ALUMINUM	.23 - .57	#4 - #4/0	#4 - #4/0	5 1/4	45 LBS.
LPC - 86	ALUMINUM	.35 - .86	#1/0 - #477 26/7	#1/0 - #556	5 1/4	48 LBS.
LPC - 118	ALUMINUM	.50 - 1.18	#3/0 - #954 54/7	#4/0 - #1033	5 1/4	65 LBS.
LPC - 150	ALUMINUM	.93 - 1.50	#556.5 - #1510.5	#715.5 - #1590	5 1/4	70 LBS.
LPC - 200	ALUMINUM	1.50 - 2.00	#605 - #1113	#795 - #1192.5	6 1/2	80 LBS.
FLPC - 57	DUCTILE IRON	.23 - .57	#4 - #4/0	—————	5 1/4	250 LBS.
FLPC - 86	DUCTILE IRON	.35 - .86	#1/0 - #477 26/7	—————	5 1/4	260 LBS.
FLPC - 118	DUCTILE IRON	.50 - 1.18	#3/0 - 715.5 26/7	—————	5 1/4	273 LBS.
FLPC - 150	DUCTILE IRON	.93 - 1.50	#556.5 - 1510.5	—————	5 1/4	295 LBS.
FLPC - 200	DUCTILE IRON	1.50 - 2.00	#605 - #1113	—————	6 1/2	310 LBS.

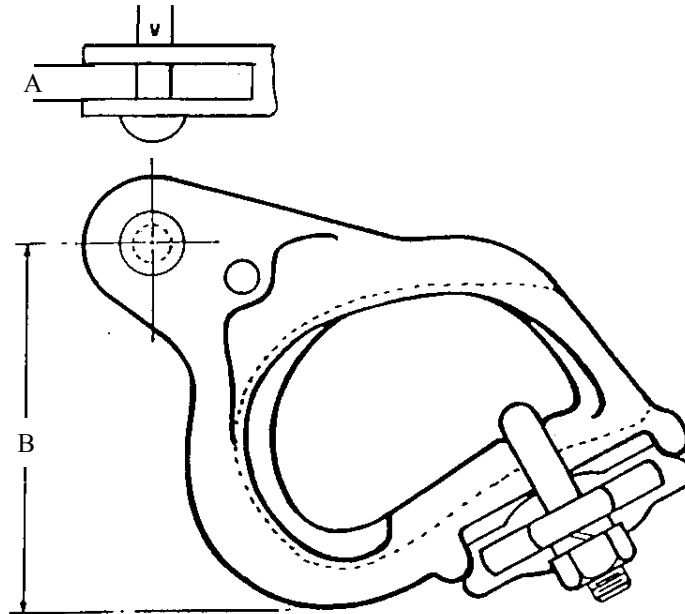
THE ABOVE TRUNNION CLAMPS ARE USED WITH CLAMP TOP LINE POST INSULATORS. THE REVERSIBLE KEEPER GIVES THE INSTALLER A WIDE CONDUCTOR RANGE. EACH CLAMP CONTAINS A RIV SUPPRESSOR SPRING.

MATERIAL FOR "LPC" TYPE : BODY & KEEPER - ALUMINUM ALLOY 356 - T6.

MATERIAL FOR "FLPC" TYPE : DUCTILE IRON HOT DIPPED GALVANIZED TO ASTM A153.

MALLEABLE UNIVERSAL DEADEND

3-11



CATALOG NUMBER	CLAMPING RANGE	DIMENSION A	DIMENSION B	ULTIMATE BODY STRENGTH	APPROX. WEIGHT PER 100
MUD - 50 - N	.12" - .50"	11/16"	4 5/16"	10,000 LBS.	240 LBS.
MUD - 53 - N	.16" - .53"	13/16"	4 1/4"	14,000 LBS.	390 LBS.

FOR SOCKET FITTING ADD THE SUFFIX "S" TO THE CATALOG NUMBER.

THE MATERIAL ON THE ABOVE UNIVERSAL DEADEND CLAMPS IS AS FOLLOWS :

BODY AND KEEPER : MALLEABLE CAST IRON HOT DIPPED GALVANIZED TO ASTM A153.

CLEVIS PIN AND BOLTS : HOT DIPPED GALVANIZED STEEL

COTTER PIN : STAINLESS STEEL