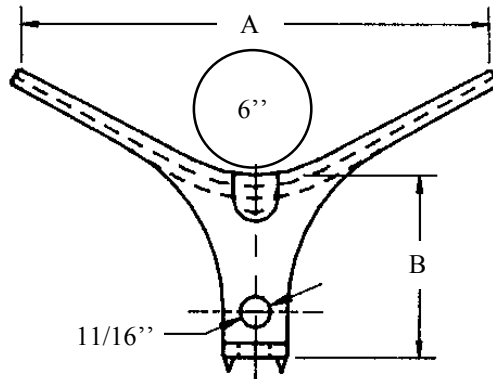


CONDUIT RISER BRACKET

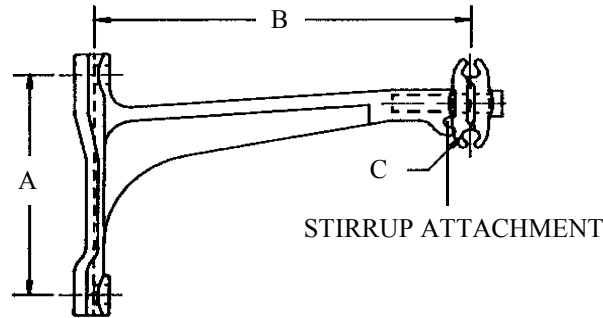


CATALOG NUMBER	DIM. A	DIM. B	CONDUIT RANGE
URB - 396	10 1/2"	4"	UP TO (3) 1" THRU 6"

THE ABOVE RISER BRACKETS WILL ACCOMMODATE UP TO 3 PIECES OF 1" TO 6" CONDUIT. THE BRACKET OFFERS THE EASE OF A ONE BOLT MOUNTING TO POLE. A BANDING TOOL IS USED TO SECURE THE CONDUIT TO THE BRACKET.

THE MATERIAL IS DUCTILE IRON HOT DIPPED GALVANIZED TO ASTM A153.

SPACER CABLE BRACKET

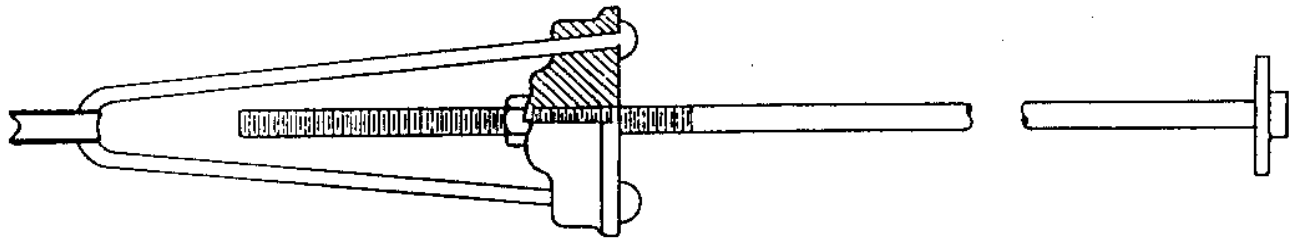


CATALOG NUMBER	DIM. A	DIM. B	MESSENGER RANGE C	MOUNTING BOLT SIZE	APPROX. WEIGHT PER 100
SCB - 8 - 12	8"	12"	1/4" — 5/8"	5/8"	1130 LBS.

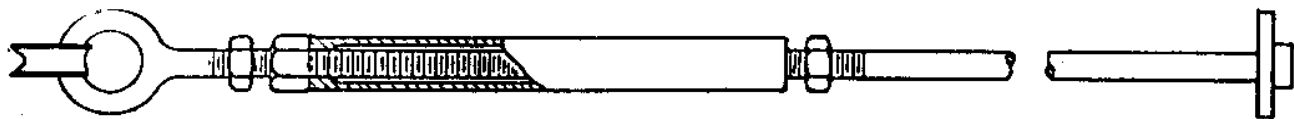
THE ABOVE CABLE SPACER BRACKET PROVIDES A CONTINUOUS STRINGING SYSTEM FOR SPACER CABLE. THE MESSENGER CLAMPS ARE REVERSIBLE AND MAY ACCEPT A WIDE RANGE OF MESSENGER SIZES. ALSO OFFERED IS A 3" SQUARE STIRRUP TO ALLOW THE CUSTOMER TO HANG THE SPACER AT THE BRACKET. FOR THIS FEATURE ADD THE SUFFIX "ST" TO THE PART NUMBER. (SCB - 8 - 12 - ST)

THE MATERIAL IS : BRACKET - MALLEABLE IRON ASTM A197 - 47
STIRRUP - 3/8" GALVANIZED STEEL
HOT DIPPED GALVANIZED TO ASTM A153

GALVANIZED STAY RODS



BOW STYLE



TURNBUCKLE STYLE

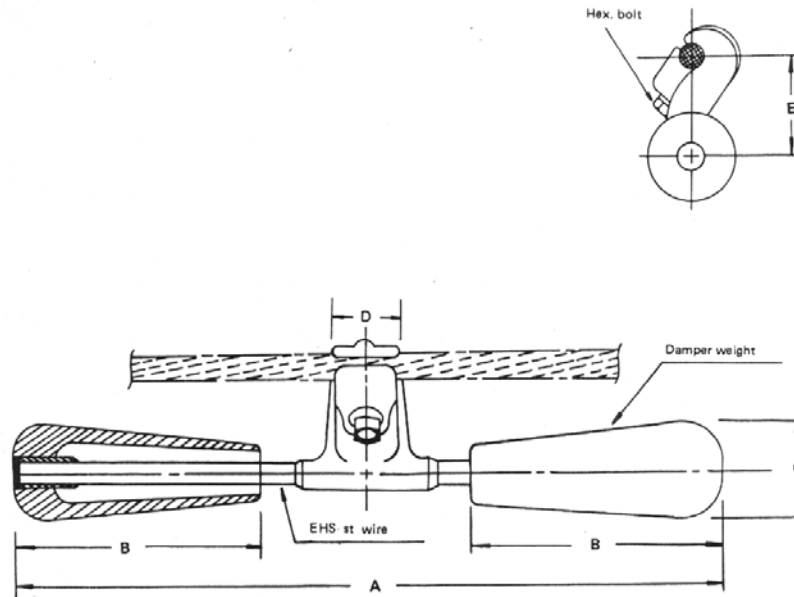
CATALOG NUMBER	ROD DIMENSION	MAXIMUM STAY WIRE SIZE
SC11SR	1/2" X 4'6"	7/14 G
SC12SR	5/8" X 4'6"	4/8 G
SC13SR	5/8" X 6'	4/8 G
SC14SR	3/4" X 6'	7/8 G
SC15SR	3/4" X 8'	7/8 G
SC16SR	7/8" X 6'	19/8 G
SC17SR	7/8" X 8'	19/8 G

CATALOG NUMBER	PLATE SIZE	SQUARE HOLE SIZE
SC61SP	9" X 9" X 3/16"	9/16"
SC62SP	12" X 12" X 3/16"	9/16"
SC63SP	12" X 12" X 3/16"	11/16"
SC64SP	15" X 15" X 3/16"	11/16"
SC65SP	15" X 15" X 3/16"	13/16"
SC66SP	15" X 15" X 3/16"	15/16"
SC67SP	18" X 18" X 1/4"	15/16"

CATALOG NUMBER	DIMENSION STAY WASHER	SQUARE HOLE SIZE
SC68SW	4" X 4" X 1/4"	AS REQUIRED
SC69SW	6" X 6" X 5/16"	AS REQUIRED

THE ABOVE STAY RODS ARE HOT DIPPED GALVANIZED TO ASTM A153.
OTHER SIZES ARE AVAILABLE UPON REQUEST.

STOCKBRIDGE VIBRATION DAMPERS

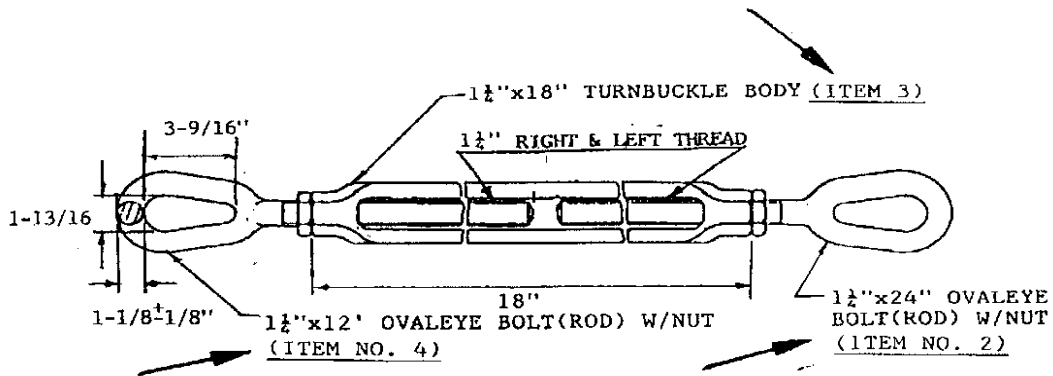


CATALOG NUMBER	CONDUCTOR DIAMETER RANGE	DIMENSION A	DIMENSION B	DIMENSION C	DIMENSION D	DIMENSION E	NOMINAL WEIGHT EACH
SVD15	.22" - .26"	11.88"	2.75"	1.44"	1.88"	2.13"	2 LBS.
SVD20	.26" - .33"	12.25"	3.00"	1.56"	1.88"	2.13"	2.5 LBS.
SVD30	.33" - .39"	13.25"	3.50"	1.75"	1.88"	2.13"	3.5 LBS.
SVD40	.39" - .47"	13.88"	3.81"	2.00"	2.13"	2.13"	4.8 LBS.
SVD60	.47" - .59"	17.00"	6.50"	2.06"	2.13"	2.50"	7.5 LBS.
SVD80	.59" - .70"	18.63"	7.13"	2.25"	2.13"	2.50"	9.5 LBS.
SVD100	.70" - .83"	20.31"	7.81"	2.38"	2.25"	3.06"	11.7 LBS.
SVD120	.83" - .97"	21.81"	8.50"	2.50"	2.25"	3.06"	13.9 LBS.
SVD140	.97" - 1.14"	24.19"	9.13"	2.63"	2.44"	3.50"	16.1 LBS.
SVD160	1.14" - 1.30"	24.88"	9.81"	2.75"	2.44"	3.50"	18 LBS.
SVD180	1.30" - 1.55"	26.19"	10.13"	2.81"	2.50"	3.88"	20.5 LBS.

THE ABOVE DAMPERS ARE PRIMARILY USED TO PREVENT DAMAGE TO CONDUCTOR CAUSED BY WIND INDUCED VIBRATION. THE WEIGHTS USED HAVE A CORROSION RESISTANT SURFACE AND ROUNDED EDGES TO PREVENT POSSIBLE CORONA DISCHARGE. THE BOLTED CLAMP OFFERS A WIDE RANGE OF CONDUCTOR SIZES. PLEASE PROVIDE YOUR CONDUCTOR TYPE AND SIZE WHEN REQUESTING INFORMATION. OTHER SIZES ARE AVAILABLE UPON REQUEST.

TURNBUCKLE WITH OVAL EYE RODS

7-5



- * MATERIAL : STEEL
- * HOT DIP GALVANIZED TO ASTM A153
- * MIN. BREAKING LOAD : 73500 LBS

THE ABOVE STEEL TURNBUCKLE ASSEMBLY IS SHOWN WITH OVAL EYE RODS APPLIED AT EACH END.
THE MINIMUM BREAKING STRENGTH FOR THIS ASSEMBLY IS 73500 LBS.
CONTACT UPI FOR ANY SPECIAL LENGTH REQUIREMENTS OR OTHER FITTINGS NEEDED FOR THIS ASSEMBLY.

THE MATERIAL USED IS HIGH STRENGTH STEEL HOT DIPPED GALVANIZED TO ASTM A153.

U-SEAL INSULATING MASTIC

7-6



CATALOG NUMBER	DIMENSION	STANDARD PACK	WEIGHT PER ROLL
U-SEAL	3 3/4" X .125" X 10'	8 ROLLS / CASE	3 LBS.

THE ABOVE INSULATING MASTIC TAPE IS USED FOR INSULATING AND PROTECTING LOW VOLTAGE CONNECTORS ABOVE GROUND, IN HAND HOLES OR BURIED. AND FOR DUCT SEALS, SEALING ENDS OF CABLES AND HAND SPLICING.

DEVELOPS EXCELLENT ADHESION TO MOST CLEAN DRY, OIL AND DUST FREE SUBSTRATES, AS ALUMINUM, COPPER, PORCELAIN, GLASS, AND NEOPRENE JACKET CABLES. HAS EXCELLENT COHESIVE PROPERTIES.

WORKING TEMPERATURE : - 35 F TO 170 F

RESISTS : WEATHER, WATER, SOIL, SALT SPRAY, DILUTED ACIDS, SODIUM HYDROXIDE AND ALCOHOL.

COLOR : BLACK